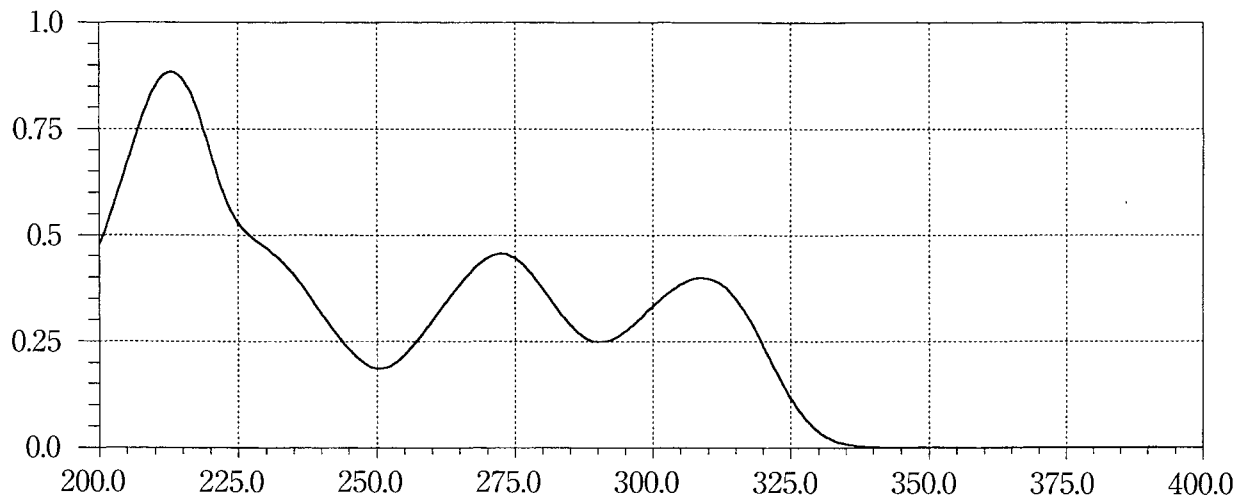
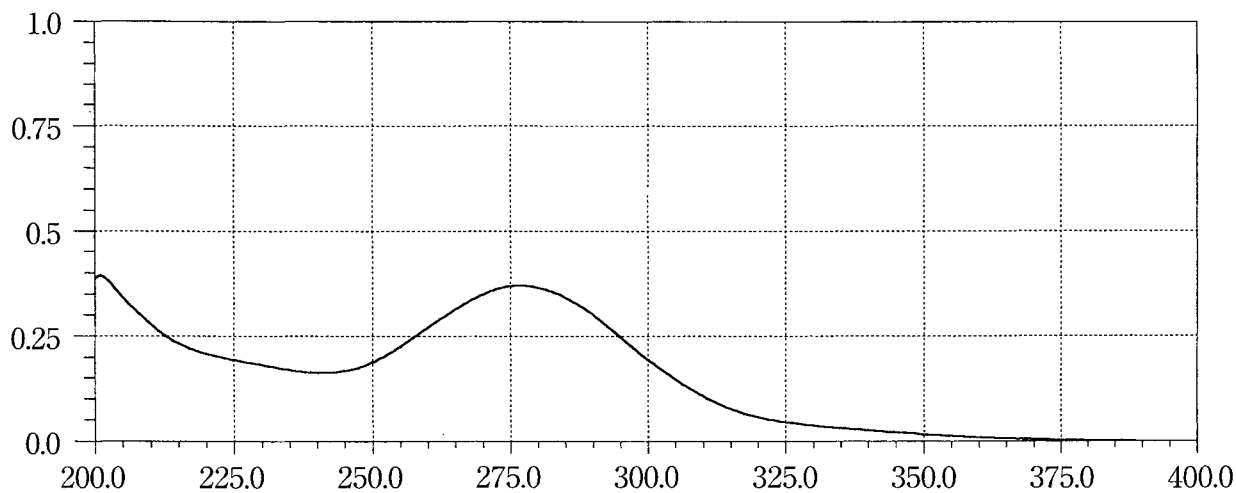


Metoclopramide



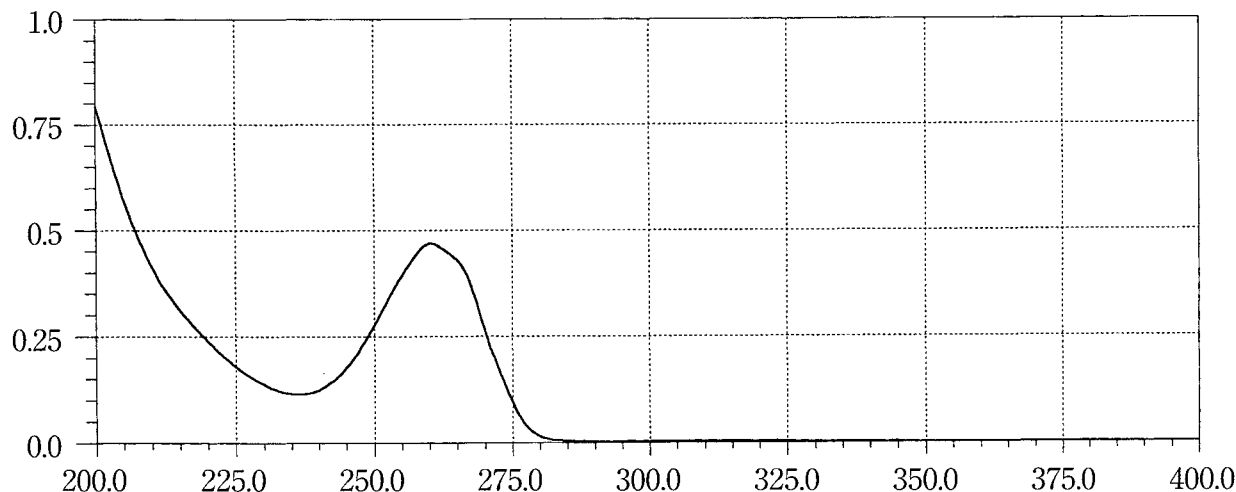
A solution prepared as follows: Dissolve 0.1 g of Metoclopramide in 1 mL of 1 mol/L hydrochloric acid TS, and add water to make 100 mL. To 1 mL of this solution add water to make 100 mL.

Metronidazole



A solution in 0.1 mol/L hydrochloric acid TS (1 in 100,000)

Metyrapone



A solution in 0.5 mol/L sulfuric acid TS (1 in 100,000)