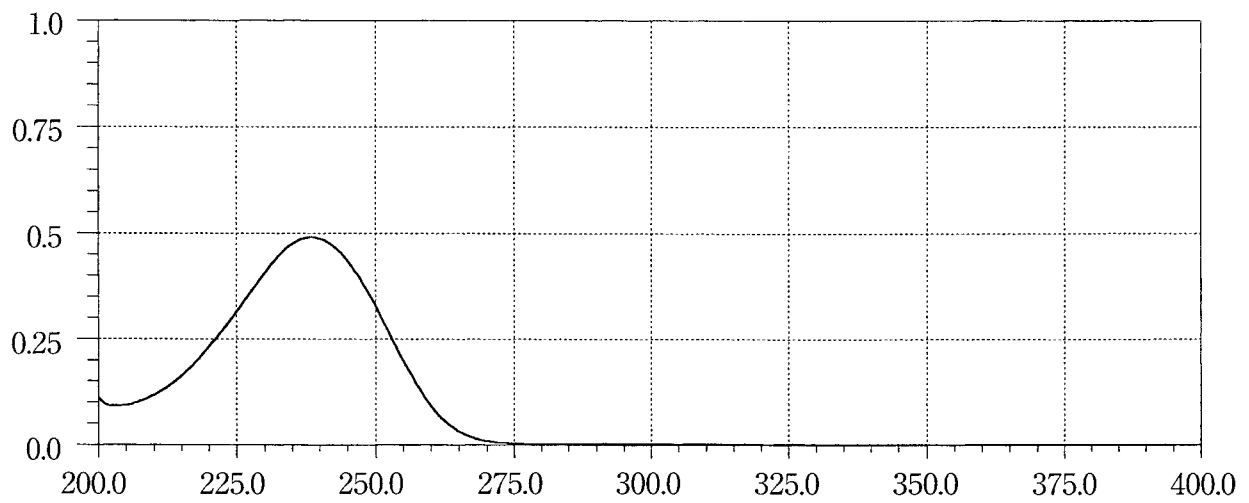
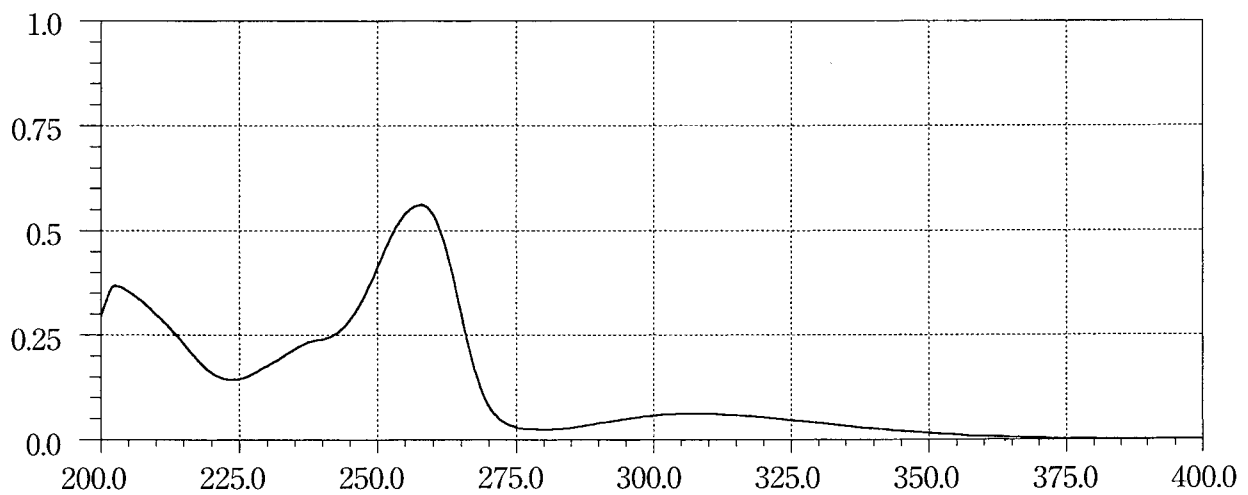
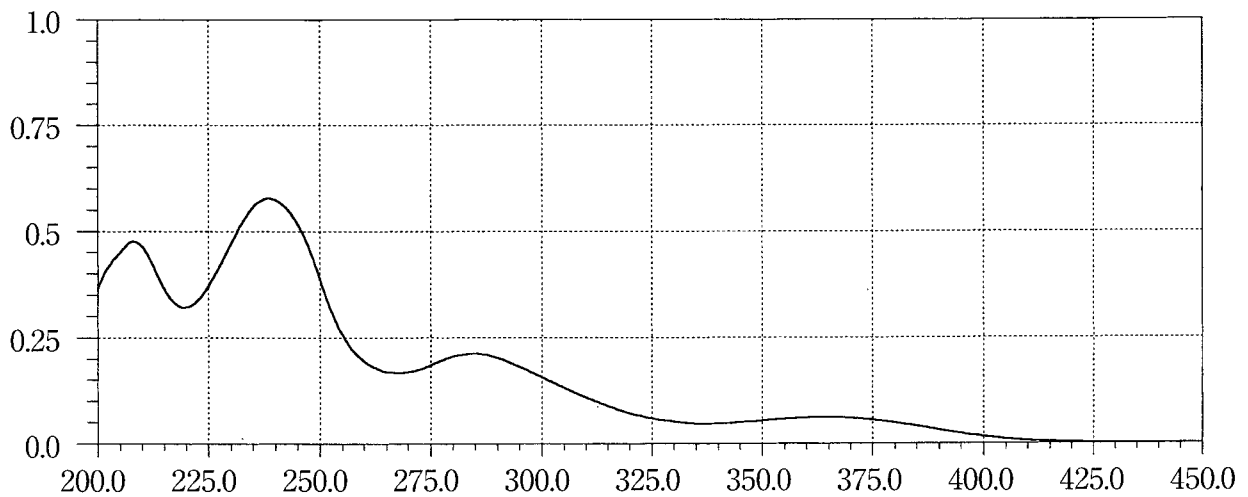


**Fluoxymesterone**

A solution in ethanol (95) (1 in 100,000)

**Fluphenazine Enanthate**

A solution prepared as follows: Dissolve 2 mg of Fluphenazine Enanthate in 200 mL of the solution of hydrochloric acid in methanol (17 in 2000).

**Flurazepam Hydrochloride**

A solution in sulfuric acid-ethanol TS (1 in 100,000)