

methanol, and practically insoluble in ethanol (95), in acetic anhydride and in diethyl ether.

Identification (1) To 10 mL of a solution of Potassium Guaiacolsulfonate (1 in 100) add 2 drops of iron (III) chloride TS: a blue-purple color develops.

(2) Dissolve 0.25 g of Potassium Guaiacolsulfonate in water to make 500 mL, and to 10 mL of this solution add phosphate buffer solution, pH 7.0, to make 100 mL. Determine the absorption spectrum of this solution as directed under the Ultraviolet-visible Spectrophotometry, and compare the spectrum with the Reference Spectrum: both spectra exhibit similar intensities of absorption at the same wavelengths.

(3) A solution of Potassium Guaiacolsulfonate (1 in 10) responds to Qualitative Tests for potassium salt.

pH Dissolve 1.0 g of Potassium Guaiacolsulfonate in 20 mL of water: the pH of the solution is between 4.0 and 5.5.

Purity (1) Clarity and color of solution—Dissolve 1.0 g of Potassium Guaiacolsulfonate in 20 mL of water: the solution is clear and colorless.

(2) Sulfate—Perform the test with 0.8 g of Potassium Guaiacolsulfonate. Prepare the control solution with 0.50 mL of 0.005 mol/L sulfuric acid VS (not more than 0.030%).

(3) Heavy metals—Proceed with 1.0 g of Potassium Guaiacolsulfonate according to Method 1, and perform the test. Prepare the control solution with 2.0 mL of Standard Lead Solution (not more than 20 ppm).

(4) Arsenic—Prepare the test solution with 1.0 g of Potassium Guaiacolsulfonate according to Method 1, and perform the test using Apparatus B (not more than 2 ppm).

(5) Related substances—Dissolve 0.20 g of Potassium Guaiacolsulfonate in 200 mL of mobile phase, and use this solution as the sample solution. Pipet 1 mL of the sample solution, add the mobile phase to make exactly 100 mL, and use this solution as the standard solution. Perform the test with 5 μ L each of the sample solution and the standard solution as directed under the Liquid Chromatography according to the following conditions. Determine each peak area obtained from these solutions by the automatic integration method: the total area of peaks other than the peak of potassium guaiacolsulfonate from the sample solution is not larger than the peak area of potassium guaiacolsulfonate from the standard solution.

Operating conditions—

Detector: An ultraviolet absorption photometer (wavelength: 279 nm).

Column: A stainless steel column 4 mm in inside diameter and 20 to 25 cm in length, packed with dimethylaminopropylsilanized silica gel, (5 to 10 μ m in particle diameter).

Column temperature: A constant temperature of about 30°C.

Mobile phase: A mixture of 0.05 mol/L potassium dihydrogenphosphate VS and methanol (20:1).

Flow rate: Adjust the flow rate so that the retention time of potassium guaiacolsulfonate is about 10 minutes.

Selection of column: Weigh 0.050 g each of potassium guaiacolsulfonate and guaiacol, and dissolve in 50 mL of the mobile phase. Proceed with 5 μ L of this solution under the above operating conditions, and calculate the resolution. Use a column giving elution of guaiacol and potassium

guaiacolsulfonate in this order with the resolution of these peaks being not less than 4.

Detection sensitivity: Adjust the sensitivity so that the peak height of potassium guaiacolsulfonate from 5 μ L of the standard solution is not less than 10 mm.

Time span of measurement: About twice as long as the retention time of potassium guaiacolsulfonate.

Water 3.0 – 4.5% (0.3 g, direct titration).

Assay Weigh accurately about 0.3 g of Potassium Guaiacolsulfonate, dissolve in 2.0 mL of formic acid, add 50 mL of acetic anhydride, and titrate with 0.1 mol/L perchloric acid VS (potentiometric titration). Perform a blank determination, and make any necessary correction.

Each mL of 0.1 mol/L perchloric acid VS
= 24.229 mg of C₇H₇KO₅S

Containers and storage Containers—Well-closed containers.

Storage—Light-resistant.

Potassium Iodide

ヨウ化カリウム

KI: 166.00

Potassium Iodide, when dried, contains not less than 99.0% of KI.

Description Potassium Iodide occurs as colorless or white crystals, or a white crystalline powder.

It is very soluble in water, soluble in ethanol (95), and practically insoluble in diethyl ether.

It is slightly deliquescent in moist air.

Identification A solution of Potassium Iodide (1 in 20) responds to the Qualitative Tests for potassium salt and for iodide.

Purity (1) Clarity and color of solution—Dissolve 1.0 g of Potassium Iodide in 2 mL of water: the solution is clear and colorless.

(2) Alkali—Dissolve 1.0 g of Potassium Iodide in 10 mL of freshly boiled and cooled water, and add 0.50 mL of 0.005 mol/L sulfuric acid and 1 drop of phenolphthalein TS: no color develops.

(3) Chloride, bromide and thiosulfate—Dissolve 0.20 g of Potassium Iodide in 5 mL of ammonia TS, add 15.0 mL of 0.1 mol/L silver nitrate VS, shake for 2 to 3 minutes, and filter. To 10 mL of the filtrate, add 15 mL of dilute nitric acid: no brown color develops. The solution has no more turbidity than that of the following control solution.

Control solution: To 0.30 mL of 0.01 mol/L hydrochloric acid VS add 2.5 mL of ammonia TS, and 7.5 mL of 0.1 mol/L silver nitrate VS and 15 mL of dilute nitric acid.

(4) Nitrate, nitrite and ammonium—Place 1.0 g of Potassium Iodide in a 40-mL test tube, and add 5 mL of water, 5 mL of sodium hydroxide TS and 0.2 g of aluminum wire. Insert the absorbent cotton in the mouth of the test tube, and place a piece of moistened red litmus paper on it. Heat the test tube carefully on a water bath for 15 minutes:

the gas evolved does not turn red litmus paper to blue.

(5) Cyanide—Dissolve 0.5 g of Potassium Iodide in 10 mL of water. To 5 mL of this solution add 1 drop of iron (II) sulfate TS and 2 mL of sodium hydroxide TS, warm, then add 4 mL of hydrochloric acid: no green color develops.

(6) Iodate—Dissolve 0.5 g of Potassium Iodide in 10 mL of freshly boiled and cooled water, and add 2 drops of dilute sulfuric acid and 1 drop of starch TS: no blue color develops immediately.

(7) Heavy metals—Proceed with 2.0 g of Potassium Iodide according to Method 1, and perform the test. Prepare the control solution with 2.0 mL of Standard Lead Solution (not more than 10 ppm).

(8) Barium—Dissolve 0.5 g of Potassium Iodide in 10 mL of water, add 1 mL of dilute sulfuric acid, and allow to stand for 5 minutes: no turbidity is produced.

(9) Sodium—Dissolve 1.0 g of Potassium Iodide in 10 mL of water, and perform the Flame Coloration Test (1): a yellow color develops, but does not persist.

(10) Arsenic—Prepare the test solution with 0.40 g of Potassium Iodide according to Method 1, and perform the test using Apparatus B (not more than 5 ppm).

Loss on drying Not more than 1.0% (2 g, 105°C, 4 hours).

Assay Weigh accurately about 0.5 g of Potassium Iodide, previously dried, in an iodine flask, dissolve in 10 mL of water, add 35 mL of hydrochloric acid and 5 mL of chloroform, and titrate with 0.05 mol/L potassium iodate VS with shaking until the red-purple color of the chloroform layer disappears. The end point is reached when the red-purple color does not reappear in the chloroform layer within 5 minutes after the layer has been decolorized.

Each mL of 0.05 mol/L potassium iodate VS
= 16.600 mg of KI

Containers and storage Containers—Tight containers.
Storage—Light-resistant.

Potassium Permanganate

過マンガン酸カリウム

KMnO₄: 158.03

Potassium Permanganate, when dried, contains not less than 99.0% of KMnO₄.

Description Potassium Permanganate occurs as dark purple crystals and has a metallic luster.

It is soluble in water.

A solution of Potassium Permanganate (1 in 1000) has a slightly sweet, astringent taste.

Identification A solution of Potassium Permanganate (1 in 100) responds to the Qualitative Tests for permanganate.

Purity (1) Water-insoluble substances—Dissolve 2.0 g of Potassium Permanganate, previously powdered, in 200 mL of water. Filter the insoluble substances through a tared glass filter (G4), wash with water until the last washing shows no color, and dry at 105°C for 2 hours: the mass of

the residue is not more than 4 mg.

(2) Arsenic—Dissolve 0.40 g of Potassium Permanganate in 10 mL of water, add 1 mL of sulfuric acid, add hydrogen peroxide (30) dropwise until the solution remains colorless, and evaporate on a sand bath nearly to dryness. Dissolve the residue in 5 mL of water, and perform the test with this solution as the test solution using Apparatus B: the color produced is not more intense than the following standard color.

Standard color: To 10 mL of water add 1 mL of sulfuric acid and the same volume of hydrogen peroxide (30) as used for the preparation of the test solution. Evaporate the solution on a sand bath nearly to dryness, add 2.0 mL of Standard Arsenic Solution and water to make 5 mL, and carry out the test with this solution in the same manner as the test solution (not more than 5 ppm).

Loss on drying Not more than 0.5% (1 g, silica gel, 18 hours).

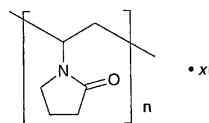
Assay Weigh accurately about 0.6 g of Potassium Permanganate, previously dried, dissolve in water to make exactly 200 mL, and use this solution as the sample solution. Pipet 25 mL of 0.05 mol/L oxalic acid VS into a 500-mL conical flask, add 200 mL of diluted sulfuric acid (1 in 20), and keep at a temperature between 30°C and 35°C. Transfer the sample solution to a buret. Add quickly 23 mL of the sample solution from the buret to the flask while shaking gently, and then allow the flask to stand until the red color disappears. Warm the mixture to a temperature between 55°C and 60°C, and continue the titration slowly until the red color persists for 30 seconds.

Each mL of 0.05 mol/L oxalic acid VS
= 3.1607 mg of KMnO₄

Containers and storage Containers—Tight containers.

Povidone-Iodine

ポビドンヨード



(C₆H₉NO)_n·xI

Poly[(2-oxopyrrolidin-1-yl)ethylene] iodine [25655-41-8]

Povidone-Iodine is a complex of iodine with 1-vinyl-2-pyrrolidone polymer.

It contains not less than 9.0% and not more than 12.0% of available iodine (I: 126.90), and not less than 9.5% and not more than 11.5% of nitrogen (N: 14.01), calculated on the dried basis.

Description Povidone-Iodine occurs as a dark red-brown powder. It has a faint, characteristic odor.

It is freely soluble in water and in ethanol (95), and practically insoluble in diethyl ether.

The pH of a solution of Povidone-Iodine (1 in 100) is between 1.5 and 3.5.