

Phthaloyl groups (C₈H₅O₃; M_r 149.1): typically 30.0 per cent to 36.0 per cent (anhydrous and acid-free substance). Dissolve 1.000 g in 50 mL of a mixture of 2 volumes of *acetone R* and 3 volumes of *ethanol (96 per cent) R*. Add 0.1 mL of *phenolphthalein solution R* and titrate with 0.1 M *sodium hydroxide*. Carry out a blank titration.

Calculate the percentage content of phthaloyl groups (*P*) using the following expression:

$$\frac{14\ 910n}{(100 - a)(100 - S)m} - \frac{179.5S}{(100 - S)}$$

- a* = percentage content of water;
m = mass of the substance to be examined, in grams;
n = volume of 0.1 M *sodium hydroxide* used, in millilitres;
S = percentage content of free acid (see Tests).

Acetyl groups (C₂H₃O; M_r 43.05): typically 21.5 per cent to 26.0 per cent (anhydrous and acid free substance). To 0.100 g add 25.0 mL of 0.1 M *sodium hydroxide* and heat on a water-bath under a reflux condenser for 30 min. Cool, add 0.1 mL of *phenolphthalein solution R* and titrate with 0.1 M *hydrochloric acid*. Carry out a blank titration.

Calculate the percentage content of acetyl groups using the following expression:

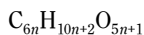
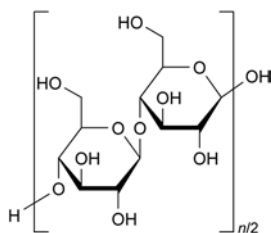
$$\left[\frac{4305(n_2 - n_1)}{(100 - a)(100 - S)m} - \frac{51.8S}{(100 - S)} \right] - 0.578P$$

- a* = percentage content of water;
m = mass of the substance to be examined, in grams;
*n*₁ = volume of 0.1 M *hydrochloric acid* used in the test, in millilitres;
*n*₂ = volume of 0.1 M *hydrochloric acid* used in the blank titration, in millilitres;
P = percentage content of phthaloyl groups;
S = percentage content of free acid (see Tests).

01/2009:0316
corrected 7.0

CELLULOSE, MICROCRYSTALLINE

Cellulosum microcristallinum



DEFINITION

Purified, partly depolymerised cellulose prepared by treating alpha-cellulose, obtained as a pulp from fibrous plant material, with mineral acids.

CHARACTERS

Appearance: white or almost white, fine or granular powder.

Solubility: practically insoluble in water, in acetone, in anhydrous ethanol, in toluene, in dilute acids and in a 50 g/L solution of sodium hydroxide.

IDENTIFICATION

- A. Place about 10 mg on a watch-glass and disperse in 2 mL of *iodinated zinc chloride solution R*. The substance becomes violet-blue.
 B. The degree of polymerisation is not more than 350.

Transfer 1.300 g to a 125 mL conical flask. Add 25.0 mL of *water R* and 25.0 mL of *cupriethylenediamine hydroxide solution R*. Immediately purge the solution with *nitrogen R*, insert the stopper and shake until completely dissolved. Transfer an appropriate volume of the solution to a suitable capillary viscometer (2.2.9). Equilibrate the solution at 25 ± 0.1 °C for at least 5 min. Record the flow time (*t*₁) in seconds between the 2 marks on the viscometer. Calculate the kinematic viscosity (*ν*₁) of the solution using the following expression:

$$t_1 (k_1)$$

where *k*₁ is the viscometer constant.

Dilute a suitable volume of *cupriethylenediamine hydroxide solution R* with an equal volume of *water R* and measure the flow time (*t*₂) using a suitable capillary viscometer. Calculate the kinematic viscosity (*ν*₂) of the solvent using the following expression:

$$t_2 (k_2)$$

where *k*₂ is the viscometer constant.

Determine the relative viscosity (*η*_{rel}) of the substance to be examined using the following expression:

$$\nu_1/\nu_2$$

Determine the intrinsic viscosity ([*η*]_c) by interpolation, using the intrinsic viscosity table (Table 0316-1).

Calculate the degree of polymerisation (*P*) using the following expression:

$$\frac{95 [\eta]_c}{m [(100 - b)/100]}$$

where *m* is the mass in grams of the substance to be examined and *b* is the loss on drying as a percentage.

TESTS

Solubility. Dissolve 50 mg in 10 mL of *ammoniacal solution of copper tetrammine R*. It dissolves completely, leaving no residue.

pH (2.2.3): 5.0 to 7.5 for the supernatant liquid.

Shake 5 g with 40 mL of *carbon dioxide-free water R* for 20 min and centrifuge.

Conductivity (2.2.38). The conductivity of the test solution does not exceed the conductivity of the water by more than 75 μS·cm⁻¹.

Use as test solution the supernatant liquid obtained in the test for pH. Measure the conductivity of the supernatant liquid after a stable reading has been obtained and measure the conductivity of the water used to prepare the test solution.

Ether-soluble substances: maximum 0.05 per cent (5 mg) for the difference between the weight of the residue and the weight obtained from a blank determination.

Place 10.0 g in a chromatography column about 20 mm in internal diameter and pass 50 mL of *peroxide-free ether R* through the column. Evaporate the eluate to dryness. Dry the residue at 105 °C for 30 min, allow to cool in a desiccator and weigh. Carry out a blank determination.

Water-soluble substances: maximum 0.25 per cent (12.5 mg) for the difference between the mass of the residue and the mass obtained from a blank determination.

Shake 5.0 g with 80 mL of *water R* for 10 min. Filter through a filter paper with the aid of vacuum into a tared flask. Evaporate to dryness on a water-bath avoiding charring. Dry at 105 °C for 1 h, allow to stand in a desiccator and weigh. Carry out a blank determination.

Table 0316-1. – *Intrinsic viscosity table*

Intrinsic viscosity $[\eta]_c$ at different values of relative viscosity η_{rel}										
η_{rel}	$[\eta]_c$									
	0.00	0.01	0.02	0.03	0.04	0.05	0.06	0.07	0.08	0.09
1.1	0.098	0.106	0.115	0.125	0.134	0.143	0.152	0.161	0.170	0.180
1.2	0.189	0.198	0.207	0.216	0.225	0.233	0.242	0.250	0.259	0.268
1.3	0.276	0.285	0.293	0.302	0.310	0.318	0.326	0.334	0.342	0.350
1.4	0.358	0.367	0.375	0.383	0.391	0.399	0.407	0.414	0.422	0.430
1.5	0.437	0.445	0.453	0.460	0.468	0.476	0.484	0.491	0.499	0.507
1.6	0.515	0.522	0.529	0.536	0.544	0.551	0.558	0.566	0.573	0.580
1.7	0.587	0.595	0.602	0.608	0.615	0.622	0.629	0.636	0.642	0.649
1.8	0.656	0.663	0.670	0.677	0.683	0.690	0.697	0.704	0.710	0.717
1.9	0.723	0.730	0.736	0.743	0.749	0.756	0.762	0.769	0.775	0.782
2.0	0.788	0.795	0.802	0.809	0.815	0.821	0.827	0.833	0.840	0.846
2.1	0.852	0.858	0.864	0.870	0.876	0.882	0.888	0.894	0.900	0.906
2.2	0.912	0.918	0.924	0.929	0.935	0.941	0.948	0.953	0.959	0.965
2.3	0.971	0.976	0.983	0.988	0.994	1.000	1.006	1.011	1.017	1.022
2.4	1.028	1.033	1.039	1.044	1.050	1.056	1.061	1.067	1.072	1.078
2.5	1.083	1.089	1.094	1.100	1.105	1.111	1.116	1.121	1.126	1.131
2.6	1.137	1.142	1.147	1.153	1.158	1.163	1.169	1.174	1.179	1.184
2.7	1.190	1.195	1.200	1.205	1.210	1.215	1.220	1.225	1.230	1.235
2.8	1.240	1.245	1.250	1.255	1.260	1.265	1.270	1.275	1.280	1.285
2.9	1.290	1.295	1.300	1.305	1.310	1.314	1.319	1.324	1.329	1.333
3.0	1.338	1.343	1.348	1.352	1.357	1.362	1.367	1.371	1.376	1.381
3.1	1.386	1.390	1.395	1.400	1.405	1.409	1.414	1.418	1.423	1.427
3.2	1.432	1.436	1.441	1.446	1.450	1.455	1.459	1.464	1.468	1.473
3.3	1.477	1.482	1.486	1.491	1.496	1.500	1.504	1.508	1.513	1.517
3.4	1.521	1.525	1.529	1.533	1.537	1.542	1.546	1.550	1.554	1.558
3.5	1.562	1.566	1.570	1.575	1.579	1.583	1.587	1.591	1.595	1.600
3.6	1.604	1.608	1.612	1.617	1.621	1.625	1.629	1.633	1.637	1.642
3.7	1.646	1.650	1.654	1.658	1.662	1.666	1.671	1.675	1.679	1.683
3.8	1.687	1.691	1.695	1.700	1.704	1.708	1.712	1.715	1.719	1.723
3.9	1.727	1.731	1.735	1.739	1.742	1.746	1.750	1.754	1.758	1.762
4.0	1.765	1.769	1.773	1.777	1.781	1.785	1.789	1.792	1.796	1.800
4.1	1.804	1.808	1.811	1.815	1.819	1.822	1.826	1.830	1.833	1.837
4.2	1.841	1.845	1.848	1.852	1.856	1.859	1.863	1.867	1.870	1.874
4.3	1.878	1.882	1.885	1.889	1.893	1.896	1.900	1.904	1.907	1.911
4.4	1.914	1.918	1.921	1.925	1.929	1.932	1.936	1.939	1.943	1.946

Intrinsic viscosity $[\eta]_c$ at different values of relative viscosity η_{rel}										
η_{rel}	$[\eta]_c$									
	0.00	0.01	0.02	0.03	0.04	0.05	0.06	0.07	0.08	0.09
4.5	1.950	1.954	1.957	1.961	1.964	1.968	1.971	1.975	1.979	1.982
4.6	1.986	1.989	1.993	1.996	2.000	2.003	2.007	2.010	2.013	2.017
4.7	2.020	2.023	2.027	2.030	2.033	2.037	2.040	2.043	2.047	2.050
4.8	2.053	2.057	2.060	2.063	2.067	2.070	2.073	2.077	2.080	2.083
4.9	2.087	2.090	2.093	2.097	2.100	2.103	2.107	2.110	2.113	2.116
5.0	2.119	2.122	2.125	2.129	2.132	2.135	2.139	2.142	2.145	2.148
5.1	2.151	2.154	2.158	2.160	2.164	2.167	2.170	2.173	2.176	2.180
5.2	2.183	2.186	2.190	2.192	2.195	2.197	2.200	2.203	2.206	2.209
5.3	2.212	2.215	2.218	2.221	2.224	2.227	2.230	2.233	2.236	2.240
5.4	2.243	2.246	2.249	2.252	2.255	2.258	2.261	2.264	2.267	2.270
5.5	2.273	2.276	2.279	2.282	2.285	2.288	2.291	2.294	2.297	2.300
5.6	2.303	2.306	2.309	2.312	2.315	2.318	2.320	2.324	2.326	2.329
5.7	2.332	2.335	2.338	2.341	2.344	2.347	2.350	2.353	2.355	2.358
5.8	2.361	2.364	2.367	2.370	2.373	2.376	2.379	2.382	2.384	2.387
5.9	2.390	2.393	2.396	2.400	2.403	2.405	2.408	2.411	2.414	2.417
6.0	2.419	2.422	2.425	2.428	2.431	2.433	2.436	2.439	2.442	2.444
6.1	2.447	2.450	2.453	2.456	2.458	2.461	2.464	2.467	2.470	2.472
6.2	2.475	2.478	2.481	2.483	2.486	2.489	2.492	2.494	2.497	2.500
6.3	2.503	2.505	2.508	2.511	2.513	2.516	2.518	2.521	2.524	2.526
6.4	2.529	2.532	2.534	2.537	2.540	2.542	2.545	2.547	2.550	2.553
6.5	2.555	2.558	2.561	2.563	2.566	2.568	2.571	2.574	2.576	2.579
6.6	2.581	2.584	2.587	2.590	2.592	2.595	2.597	2.600	2.603	2.605
6.7	2.608	2.610	2.613	2.615	2.618	2.620	2.623	2.625	2.627	2.630
6.8	2.633	2.635	2.637	2.640	2.643	2.645	2.648	2.650	2.653	2.655
6.9	2.658	2.660	2.663	2.665	2.668	2.670	2.673	2.675	2.678	2.680
7.0	2.683	2.685	2.687	2.690	2.693	2.695	2.698	2.700	2.702	2.705
7.1	2.707	2.710	2.712	2.714	2.717	2.719	2.721	2.724	2.726	2.729
7.2	2.731	2.733	2.736	2.738	2.740	2.743	2.745	2.748	2.750	2.752
7.3	2.755	2.757	2.760	2.762	2.764	2.767	2.769	2.771	2.774	2.776
7.4	2.779	2.781	2.783	2.786	2.788	2.790	2.793	2.795	2.798	2.800
7.5	2.802	2.805	2.807	2.809	2.812	2.814	2.816	2.819	2.821	2.823
7.6	2.826	2.828	2.830	2.833	2.835	2.837	2.840	2.842	2.844	2.847
7.7	2.849	2.851	2.854	2.856	2.858	2.860	2.863	2.865	2.868	2.870
7.8	2.873	2.875	2.877	2.879	2.881	2.884	2.887	2.889	2.891	2.893
7.9	2.895	2.898	2.900	2.902	2.905	2.907	2.909	2.911	2.913	2.915
8.0	2.918	2.920	2.922	2.924	2.926	2.928	2.931	2.933	2.935	2.937
8.1	2.939	2.942	2.944	2.946	2.948	2.950	2.952	2.955	2.957	2.959
8.2	2.961	2.963	2.966	2.968	2.970	2.972	2.974	2.976	2.979	2.981
8.3	2.983	2.985	2.987	2.990	2.992	2.994	2.996	2.998	3.000	3.002
8.4	3.004	3.006	3.008	3.010	3.012	3.015	3.017	3.019	3.021	3.023
8.5	3.025	3.027	3.029	3.031	3.033	3.035	3.037	3.040	3.042	3.044

Intrinsic viscosity $[\eta]_c$ at different values of relative viscosity η_{rel}										
η_{rel}	$[\eta]_c$									
	0.00	0.01	0.02	0.03	0.04	0.05	0.06	0.07	0.08	0.09
8.6	3.046	3.048	3.050	3.052	3.054	3.056	3.058	3.060	3.062	3.064
8.7	3.067	3.069	3.071	3.073	3.075	3.077	3.079	3.081	3.083	3.085
8.8	3.087	3.089	3.092	3.094	3.096	3.098	3.100	3.102	3.104	3.106
8.9	3.108	3.110	3.112	3.114	3.116	3.118	3.120	3.122	3.124	3.126
9.0	3.128	3.130	3.132	3.134	3.136	3.138	3.140	3.142	3.144	3.146
9.1	3.148	3.150	3.152	3.154	3.156	3.158	3.160	3.162	3.164	3.166
9.2	3.168	3.170	3.172	3.174	3.176	3.178	3.180	3.182	3.184	3.186
9.3	3.188	3.190	3.192	3.194	3.196	3.198	3.200	3.202	3.204	3.206
9.4	3.208	3.210	3.212	3.214	3.215	3.217	3.219	3.221	3.223	3.225
9.5	3.227	3.229	3.231	3.233	3.235	3.237	3.239	3.241	3.242	3.244
9.6	3.246	3.248	3.250	3.252	3.254	3.256	3.258	3.260	3.262	3.264
9.7	3.266	3.268	3.269	3.271	3.273	3.275	3.277	3.279	3.281	3.283
9.8	3.285	3.287	3.289	3.291	3.293	3.295	3.297	3.298	3.300	3.302
9.9	3.304	3.305	3.307	3.309	3.311	3.313	3.316	3.318	3.320	3.321

Intrinsic viscosity $[\eta]_c$ at different values of relative viscosity η_{rel}										
η_{rel}	$[\eta]_c$									
	0.0	0.1	0.2	0.3	0.4	0.5	0.6	0.7	0.8	0.9
10	3.32	3.34	3.36	3.37	3.39	3.41	3.43	3.45	3.46	3.48
11	3.50	3.52	3.53	3.55	3.56	3.58	3.60	3.61	3.63	3.64
12	3.66	3.68	3.69	3.71	3.72	3.74	3.76	3.77	3.79	3.80
13	3.80	3.83	3.85	3.86	3.88	3.89	3.90	3.92	3.93	3.95
14	3.96	3.97	3.99	4.00	4.02	4.03	4.04	4.06	4.07	4.09
15	4.10	4.11	4.13	4.14	4.15	4.17	4.18	4.19	4.20	4.22
16	4.23	4.24	4.25	4.27	4.28	4.29	4.30	4.31	4.33	4.34
17	4.35	4.36	4.37	4.38	4.39	4.41	4.42	4.43	4.44	4.45
18	4.46	4.47	4.48	4.49	4.50	4.52	4.53	4.54	4.55	4.56
19	4.57	4.58	4.59	4.60	4.61	4.62	4.63	4.64	4.65	4.66

Heavy metals (2.4.8): maximum 10 ppm.

2.0 g complies with test C. Prepare the reference solution using 2 mL of *lead standard solution (10 ppm Pb) R*.

Loss on drying (2.2.32): maximum 7.0 per cent, determined on 1.000 g by drying in an oven at 105 °C for 3 h.

Sulfated ash (2.4.14): maximum 0.1 per cent, determined on 1.0 g.

Microbial contamination

TAMC: acceptance criterion 10^3 CFU/g (2.6.12).

TYMC: acceptance criterion 10^2 CFU/g (2.6.12).

Absence of *Escherichia coli* (2.6.13).

Absence of *Pseudomonas aeruginosa* (2.6.13).

Absence of *Staphylococcus aureus* (2.6.13).

Absence of *Salmonella* (2.6.13).

FUNCTIONALITY-RELATED CHARACTERISTICS

This section provides information on characteristics that are recognised as being relevant control parameters for one or more functions of the substance when used as an excipient (see chapter 5.15). This section is a non-mandatory part of the monograph and it is not necessary to verify the characteristics to demonstrate compliance. Control of these characteristics can however contribute to the quality of a medicinal product by improving the consistency of the manufacturing process and the performance of the medicinal product during use. Where control methods are cited, they are recognised as being suitable for the purpose, but other methods can also be used. Wherever results for a particular characteristic are reported, the control method must be indicated.

The following characteristics may be relevant for microcrystalline cellulose used as binder, diluent or disintegrant.

Particle-size distribution (2.9.31 or 2.9.38).

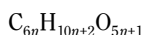
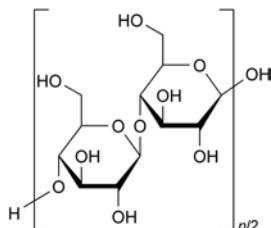
Powder flow (2.9.36).

01/2009:0315

 ν_1/ν_2

CELLULOSE, POWDERED

Cellulosi pulvis



DEFINITION

Purified, mechanically disintegrated cellulose prepared by processing alpha-cellulose obtained as a pulp from fibrous plant material.

CHARACTERS

Appearance: white or almost white, fine or granular powder.

Solubility: practically insoluble in water, slightly soluble in a 50 g/L solution of sodium hydroxide, practically insoluble in acetone, in anhydrous ethanol, in toluene, in dilute acids and in most organic solvents.

IDENTIFICATION

A. Place about 10 mg on a watch-glass and disperse in 2 mL of *iodinated zinc chloride solution R*. The substance becomes violet-blue.

B. The degree of polymerisation is greater than 440.

Transfer 0.250 g to a 125 mL conical flask. Add 25.0 mL of *water R* and 25.0 mL of *cupriethylenediamine hydroxide solution R*. Immediately purge the solution with *nitrogen R*, insert the stopper and shake until completely dissolved. Transfer an appropriate volume of the solution to a suitable capillary viscometer (2.2.9). Equilibrate the solution at 25 ± 0.1 °C for at least 5 min. Record the flow time (t_1) in seconds between the 2 marks on the viscometer. Calculate the kinematic viscosity (ν_1) of the solution using the following expression:

$$t_1 (k_1)$$

where k_1 is the viscometer constant.

Dilute a suitable volume of *cupriethylenediamine hydroxide solution R* with an equal volume of *water R* and measure the flow time (t_2) using a suitable capillary viscometer. Calculate the kinematic viscosity (ν_2) of the solvent using the following expression:

$$t_2 (k_2)$$

where k_2 is the viscometer constant.

Determine the relative viscosity (η_{rel}) of the substance to be examined using the following expression:

Determine the intrinsic viscosity ($[\eta]_c$) by interpolation, using the intrinsic viscosity table (Table 0315-1).

Calculate the degree of polymerisation (P) using the following expression:

$$\frac{95 [\eta]_c}{m [(100 - b) / 100]}$$

where m is the mass in grams of the substance to be examined and b is the loss on drying as a percentage.

TESTS

Solubility. Dissolve 50 mg in 10 mL of *ammoniacal solution of copper tetrammine R*. It dissolves completely, leaving no residue.

pH (2.2.3): 5.0 to 7.5 for the supernatant liquid.

Mix 10 g with 90 mL of *carbon dioxide-free water R* and allow to stand with occasional stirring for 1 h.

Ether-soluble substances: maximum 0.15 per cent (15 mg) for the difference between the mass of the residue and the mass obtained from a blank determination.

Place 10.0 g in a chromatography column about 20 mm in internal diameter and pass 50 mL of *peroxide-free ether R* through the column. Evaporate the eluate to dryness in a previously dried and tared evaporating dish, with the aid of a current of air in a fume hood. After all the ether has evaporated, dry the residue at 105 °C for 30 min, allow to cool in a desiccator and weigh. Carry out a blank determination.

Water-soluble substances: maximum 1.5 per cent (15.0 mg) for the difference between the mass of the residue and the mass obtained from a blank determination.

Shake 6.0 g with 90 mL of *carbon dioxide-free water R* for 10 min. Filter with the aid of vacuum into a tared flask. Discard the first 10 mL of the filtrate and pass the filtrate through the same filter a second time, if necessary, to obtain a clear filtrate. Evaporate a 15.0 mL portion of the filtrate to dryness in a tared evaporating dish without charring. Dry at 105 °C for 1 h, allow to cool in a desiccator and weigh. Carry out a blank determination.

Heavy metals (2.4.8): maximum 10 ppm.

2.0 g complies with test C. Prepare the reference solution using 2 mL of *lead standard solution (10 ppm Pb) R*.

Loss on drying (2.2.32): maximum 6.5 per cent, determined on 1.000 g by drying in an oven at 105 °C for 3 h.

Sulfated ash (2.4.14): maximum 0.3 per cent (dried substance), determined on 1.0 g.

Microbial contamination

TAMC: acceptance criterion 10^3 CFU/g (2.6.12).

TYMC: acceptance criterion 10^2 CFU/g (2.6.12).

Absence of *Escherichia coli* (2.6.13).

Absence of *Pseudomonas aeruginosa* (2.6.13).

Absence of *Staphylococcus aureus* (2.6.13).

Absence of *Salmonella* (2.6.13).