

Rimonabant is also being studied as an aid to smoking cessation but a systematic review¹² of randomised controlled studies concluded that although rimonabant 20 mg daily may be of benefit in stopping smoking, the evidence in maintaining abstinence is inconclusive.

- Boyd ST, Fremming BA. Rimonabant—a selective CB1 antagonist. *Ann Pharmacother* 2005; **39**: 684–90.
- Gelfand EV, Cannon CP. Rimonabant: a cannabinoid receptor type 1 blocker for management of multiple cardiometabolic risk factors. *J Am Coll Cardiol* 2006; **47**: 1919–26.
- Hennes S, et al. Rimonabant. *Drugs* 2006; **66**: 2109–19.
- Patel PN, Pathak R. Rimonabant: a novel selective cannabinoid-1 receptor antagonist for treatment of obesity. *Am J Health-Syst Pharm* 2007; **64**: 481–9.
- Xie S, et al. The endocannabinoid system and rimonabant: a new drug with a novel mechanism of action involving cannabinoid CB₁ receptor antagonism — or inverse agonism — as potential obesity treatment and other therapeutic use. *J Clin Pharm Ther* 2007; **32**: 209–31.
- Van Gaal LF, et al. Effects of the cannabinoid-1 receptor blocker rimonabant on weight reduction and cardiovascular risk factors in overweight patients: 1-year experience from the RIO-Europe study. *Lancet* 2005; **365**: 1389–97. Correction. *ibid.* **366**: 370.
- Pi-Sunyer FX, et al. Effect of rimonabant, a cannabinoid-1 receptor blocker, on weight and cardiometabolic risk factors in overweight or obese patients: RIO-North America: a randomized controlled trial. *JAMA* 2006; **295**: 761–75.
- Després J-P, et al. Effects of rimonabant on metabolic risk factors in overweight patients with dyslipidemia. *N Engl J Med* 2005; **353**: 2121–34.
- Scheen AJ, et al. RIO-Diabetes Study Group. Efficacy and tolerability of rimonabant in overweight or obese patients with type 2 diabetes: a randomised controlled study. *Lancet* 2006; **368**: 1660–72.
- Christensen R, et al. Efficacy and safety of the weight-loss drug rimonabant: a meta-analysis of randomised trials. *Lancet* 2007; **370**: 1706–13.
- Curioni C, André C. Rimonabant for overweight or obesity. Available in The Cochrane Database of Systematic Reviews; Issue 4. Chichester: John Wiley; 2006 (accessed 14/02/08).
- Cahill K, Ussher M. Cannabinoid type 1 receptor antagonists (rimonabant) for smoking cessation. Available in The Cochrane Database of Systematic Reviews; Issue 4. Chichester: John Wiley; 2007 (accessed 14/02/08).

Preparations

Proprietary Preparations (details are given in Part 3)

Arg.: Acompliá; Resibant; **Cz.:** Acompliá†; **Fr.:** Acompliá†; **Gr.:** Acompliá† **Port.:** Zimulti; **UK:** Acompliá†.

Rociverine (rINN)

LG-30158; Rociverina; Rocivérine; Rociverinum. 2-Diethylamino-1-methylethyl dis-1-hydroxy(bicyclohexyl)-2-carboxylate.

Рациверин

C₂₀H₃₇NO₃ = 339.5.

CAS — 53716-44-2.

ATC — A03AA06.

ATC Vet — QA03AA06.

Profile

Rociverine is an antispasmodic that has been given orally in doses of 30 to 40 mg or rectally in doses of 50 to 75 mg daily. It has also been given by injection.

Preparations

Proprietary Preparations (details are given in Part 3)

Ital.: Rilaten.

Rose Bengal Sodium

CI Acid Red 94; Colour Index No. 45440; Rosa de bengala sódica; Rose Bengal; Sodium Rose Bengal. The disodium salt of 4,5,6,7-tetrachloro-2',4',5',7'-tetraiodofluorescein.

C₂₀H₂Cl₄I₄Na₂O₅ = 1017.6.

CAS — 11121-48-5 (rose bengal); 632-69-9 (rose bengal disodium).

ATC — S01JA02.

ATC Vet — QS01JA02.

NOTE. The name Rose Bengale has been applied to the substance described in this monograph as well as to dichlorotetraiodofluorescein (CI Acid Red 93; Ext. D & C Reds Nos. 5 and 6; Colour Index No. 45435), a compound used as its disodium or dipotassium salt as a colouring agent.

ROS is a code approved by the BP 2008 for use on single unit doses of eye drops containing rose bengal sodium where the individual container may be too small to bear all the appropriate labelling information.

Profile

Rose bengal sodium stains devitalised conjunctival and corneal epithelial cells as well as mucus and is used as an aid in the diagnosis of dry eye. It is used to detect or assess ocular damage resulting from Sjögren's syndrome or from ill-fitting contact lenses, and for keratitis, squamous cell carcinomas, and detection of foreign bodies. Rose bengal sodium is applied as 1% eye drops or as sterile papers impregnated with the dye.

Instillation of this dye may be painful, especially in dry eyes. Rose bengal sodium can stain exposed skin, clothing, and soft contact lenses. Rose bengal sodium should not be used before taking swabs as it possesses some antiviral activity.

The symbol † denotes a preparation no longer actively marketed

Rose bengal sodium is taken up by the liver and excreted in the bile; the iodine-131-labelled compound (p.2054) has been used as a diagnostic aid in the determination of hepato-biliary function.

Preparations

Proprietary Preparations (details are given in Part 3)

Canad.: Ak-Rose; **USA:** Rosets.

Rose Fruit

Brier Fruit; Cspikeróza átermés; Cynorrhodon; Cynosbati Fructus; Cynosbati Pseudofructus; Dog Rose Fruits; Églantier; Erškēčij vaisyai; Escaramujo; Hips; Hyanthium Rosae; Nypnon; Rosae Fructus; Rosae pseudo-fructus; Rose Hips; Ruusunmarja; Šípek.

Pharmacopoeias. In *Eur.* (see p.vii) and *Jpn.*

Ph. Eur. 6.2 (Dog Rose). The rose hips made up by the receptacle and the remains of the dried sepals of *Rosa canina*, *R. pendulina*, and other *Rosa* spp., with the achenes removed. It contains not less than 0.3% of ascorbic acid, calculated with reference to the dried drug. Protect from light.

Profile

The fruits of various *Rosa* species, in particular the dog rose, *R. canina*, are used as a source of vitamin C (p.1983). Rose fruit is included in herbal preparations for constipation and urinary-tract disorders.

Preparations

Proprietary Preparations (details are given in Part 3)

UK: LitoZin.

Multi-ingredient Arg.: Vitamina C-Complex; **Austral.:** Bio C; Bioglan Mega C; Bioglan Super Cal C; C Supra + Bioflavonoids†; Flavons; Glycyrrhiza Complex†; Plantidine Plus†; Sustained Release C; **Austria:** Amersang; **Chile:** Calcio 520; Natursel-C; Reduc-Te; Romox-ARL; **Cz.:** Amersang; Bronchicum Hustensirup†; Pruduškova; Stoffwechselftee N†; **Ger.:** Nephronorm med†; **Ital.:** Angiorex Complex; Golapiol G; Longevital; Nepiros; Sambuco (Specie Composta)†; **Malaysia:** Nat-C; **Philipp.:** Delrosa; **Pol.:** Cholesol; Diabetofor; Diges-Tonic; Echinasil; Sedomix; **Rus.:** Bronchicum Husten (Бронхиум Сируп от Кашля); **Switz.:** A Vogel Capsules polyvitaminees†; Tisane contre les refroidissements; **Thai.:** Nat-C Medica†; **UK:** GlucOsamax; Top C; **USA:** Amino-Opti-C; C Factors "1000" Plus; Ester-C Plus; Ester-C Plus Multi-Mineral; **Venez.:** Ro-C-Var.

Rose Oil

Attar of Rose; Esencia de Rosa; Oleum Rosae; Otto of Rose; Rosa, aceite esencial de.

Pharmacopoeias. In *USNF*.

USNF 26 (Rose Oil). A volatile oil distilled with steam from the fresh flowers of *Rosa gallica*, *R. damascena*, *R. alba*, *R. centifolia*, and varieties of these species (Rosaceae). It is a colourless or yellow liquid, having the characteristic odour of rose. At 25° it is a viscous liquid. On gradual cooling, it changes to a translucent, crystalline mass, easily liquefied by warming. Miscible with an equal volume of chloroform. Store in well-filled airtight containers.

Profile

Rose oil is largely employed in perfumery and toilet preparations and has been used as a flavour. It is also used in aromatherapy. It contains citronellol. Hypersensitivity reactions have been reported.

Preparations

USNF 26: Stronger Rose Water;

USP 31: Rose Water Ointment.

Proprietary Preparations (details are given in Part 3)

Hung.: Naksolt†.

Multi-ingredient Arg.: Estri-Atlas; **Chile:** Cicapost; **Ger.:** Rosatum Heilsalbe; **Port.:** Cicapost.

Rosemary

Romarin; Romarin (rosemary leaf); Roris Marini; Rosmariinlehti (rosemary leaf); Rosmarin; Rosmarinblad (rosemary leaf); Rosmarini folium (rosemary leaf); Rozmaringlevél (rosemary leaf); Rozmarinų lapai (rosemary leaf); Rozmarýnový list (rosemary leaf).

Pharmacopoeias. *Eur.* (see p.vii) includes the dried leaf.

Ph. Eur. 6.2 (Rosemary Leaf; Rosmarini Folium). The whole, dried leaf of *Rosmarinus officinalis*. It contains not less than 1.2% w/w of essential oil and not less than 3% of total hydroxy-cinnamic derivatives, expressed as rosmarinic acid (C₁₈H₁₆O₈ = 360.3) both with reference to the anhydrous drug.

Profile

Rosemary (*Rosmarinus officinalis*, Lamiaceae) has rubefacient and mild analgesic activity when applied topically, and is included in external preparations for rheumatic and circulatory disorders. It is also reported to have carminative, spasmolytic, and diuretic effects and is included in herbal preparations for gastrointestinal, cardiovascular, and urinary-tract disorders.

Rosemary is a source of rosemary oil (below).

Preparations

Proprietary Preparations (details are given in Part 3)

Braz.: Alinite.

Multi-ingredient Arg.: Acnetrol; Sequalis G; **Austral.:** Avena Complex; Garlic Allium Complex; Vitanox; **Austria:** Euka; **Chile:** Rhus Opodeldoc; Romox-ARL; **Cz.:** Hertz- und Kreislauftee†; Naturlind Grosser Swedenbitter†; **Fr.:** Depuratum; Hepax; Mediflor Tisane Contre la Constipation Passagère No 7; Mediflor Tisane Digestive No 3; Mediflor Tisane Hépatique No 5; Romarene; **Ger.:** Canephron; JUVitron†; Meissengeist; Seda-Plantina†; **Mon.:** Romanex; **Pol.:** Cardiactiv; **Rus.:** Canephron N (Канефрон Н); **Spain:** Linimento Naion; Mesat†; Natusor Hepavesical†; Natusor Low Blood Pressure†; Natusor Sinulan†; Resolutivo Regium; **Switz.:** Phytomed Cardio; **Venez.:** Flodacép.

Rosemary Oil

Esencia de Romero; Essence de Romarin; Essência de Alecrim; Oleum Roris Marini; Oleum Rosmarini; Romarin, huile essentielle de; Romero, aceite esencial de; Rosmariinöljy; Rosmarini aetheroleum; Rosmarini Etheroleum; Rosmarinöl; Rosmarinolja; Rozmaringolaj; Rozmarinų eterinis aliejus; Rozmarýnová silice.

Pharmacopoeias. In *Eur.* (see p.vii).

Ph. Eur. 6.2 (Rosemary Oil). The essential oil obtained by steam distillation from the flowering aerial parts of *Rosmarinus officinalis*. It is available as Spanish type rosemary oil and Moroccan and Tunisian type rosemary oil. Spanish type rosemary oil contains 2.0 to 4.5% borneol, 0.5 to 2.5% bornyl acetate, 8.0 to 12.0% camphene, 13.0 to 21.0% camphor, 16.0 to 25.0% cineole, 1.0 to 2.2% *p*-cymene, 2.5 to 5.0% limonene, 1.5 to 5.0% β -myrcene, 18 to 26% α -pinene, 2.0 to 6.0% β -pinene, 1.0 to 3.5% α -terpineol, and 0.7 to 2.5% verbenone. Moroccan and Tunisian type rosemary oil contains 1.5 to 5.0% borneol, 0.1 to 1.5% bornyl acetate, 2.5 to 6.0% camphene, 5.0 to 15.0% camphor, 38.0 to 55.0% cineole, 0.8 to 2.5% *p*-cymene, 1.5 to 4.0% limonene, 1.0 to 2.0% β -myrcene, 9.0 to 14.0% α -pinene, 4.0 to 9.0% β -pinene, 1.0 to 2.6% α -terpineol, and a maximum of 0.4% verbenone.

A clear, mobile, colourless to pale yellow liquid with a characteristic odour. Store in well-filled airtight containers at a temperature not exceeding 25°. Protect from light.

Profile

Rosemary oil is carminative and mildly irritant. It is used in perfumery and as a flavour and has been employed in hair lotions, inhalations, and liniments. It is also used in aromatherapy.

Preparations

Proprietary Preparations (details are given in Part 3)

Ger.: Caprisana†; Rosapinol.

Multi-ingredient Arg.: Bano Liquido con Eucalipto†; **Austral.:** Bacopa Complex; Bosisto's Vaporising Ointment; Euky Bearub; Tixylix Chest Rub†; **Austria:** Bergeest; Carl Baders Divinal; Criniton; Opino; Pulmex; Rheuma; Rowalind; Salmurin; **Belg.:** Perubore; Pulmex; Pulmex Baby; **Braz.:** Alivio; Analgen†; Benegex; Gelfex; Gelo†; Gelonevral†; Mialgex†; Nevrol; **Chile:** Agua del Carmen; Agua Melisa Carminativa; Lekkaflam; Pulmex†; **Cz.:** Pulmex Baby†; Pulmex†; **Thrombocid. Fr.:** Aromasol; Dinacode†; Item Lentex; Maghora; Perubore; **Ger.:** Arthrodeformat P†; Arthrodynat P†; Cor-Vel; Criniton†; Dolo-cyl; Hingfong-Essenz Hofmanns; Leukona-Kreislauf-Bad†; Leukona-Rheumasalbe†; polio-elan; Retterspitz Ausserlich; Retterspitz Quick; Rheuma Bad; Rosarthron†; Tetesept Badekonzentrat Rheuma Bad†; Thrombocid; Top-Sabona†; Växicum NA†; Welelda-Rheumasalbe M; **Gr.:** Opino-jel; **Indon.:** Opino; **Ital.:** Calyptol; Cinarepa; Neuralita Migren; Valda Propoli; Vicks Baby Balsam†; Växicum NA†; **Malaysia:** Purporent†; **NZ:** Electric Blue Headlice; Tixylix Chest Rub; Vicks Baby Balsam; **Pol.:** Argol Rheuma; Aromagel; Depulol; Pulmex Baby; **Port.:** Thrombocid; **Rus.:** Carmolis Fluid (Кармолис Жидкость)†; Pulmex (Пульмекс); Pulmex Baby (Пульмекс Бэби); Theraflu Bro (Терафлю Бро); **S.Afr.:** Amica Massage Oil; Balm Vita GEL; Balm Vita ROQ; Entressdruppels HM; Oleum Salviae Comp; Rooilavental; Stuidruppels; **Spain:** Beta Romero; Dolocex; Linimento Klar†; Masagil; Tonimax; **Switz.:** Carmol; Carmol Plus†; Frigoplasma†; Frixo-Drug-on Vert†; Liberal Bain†; Nasobol N; Novital; Perskinol Classic; Perubare†; Pulmex; Pulmex Baby; Spagyrom; Thrombocid; Wolo Medicinal bain antirhumatismal; Ziegella; **UK:** Adiantine; Arnica Massage Balm; Medicated Extract of Rosemary; Soothol.

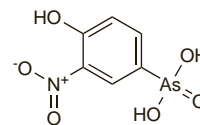
Roxarsone (BAN, USAN, rINN)

NSC-2101; Roxarsone; Roxarsonom. 4-Hydroxy-3-nitrophenylarsonic acid.

Роксарсон

C₆H₆AsNO₆ = 263.0.

CAS — 121-19-7.



Pharmacopoeias. In *US* for veterinary use only.

USP 31 (Roxarsone). A pale yellow, crystalline powder. Slightly soluble in cold water; soluble in boiling water; freely soluble in dehydrated alcohol, in acetic acid, in acetone, in methyl alco-